

Local family health teams: A Vitalité Health Network solution to meet growing needs

New Brunswick is experiencing significant population growth and an aging population, which means greater health needs. Vitalité Health Network has therefore developed a model based on creating local family health teams that can provide more patients with access to primary health care, as well as faster access.

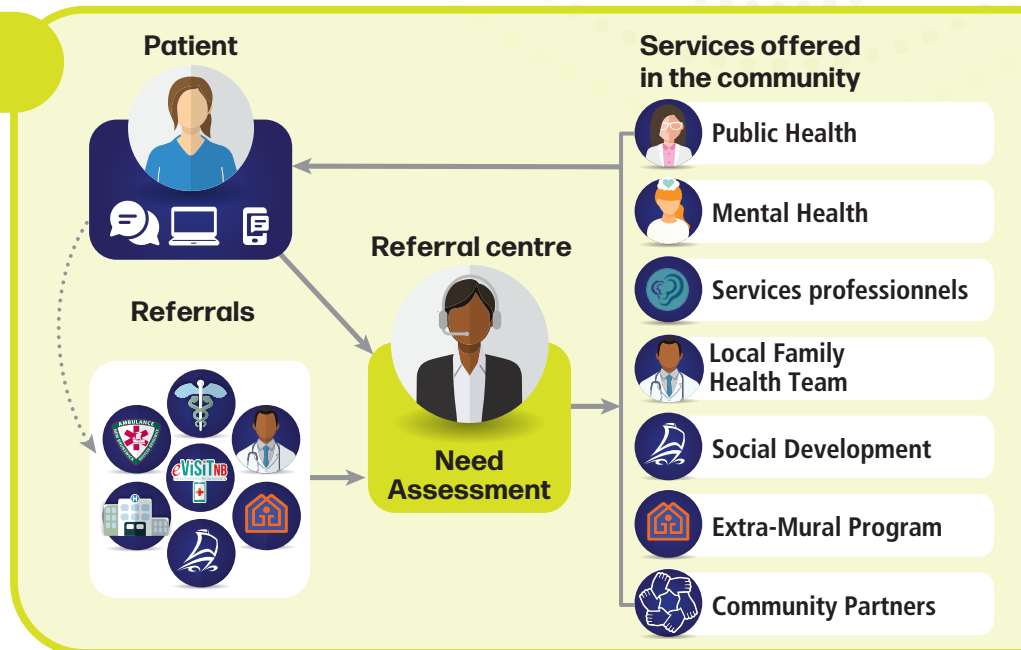


The Vitalité Health Network model is proving its worth

- A network of health care professionals working together to foster the health of their patients
- A referral centre to direct patients to the right care providers

Soon to be available in all Vitalité Health Network communities

- Model being rolled out in 13 communities
- Phase 2: integration of professional services (psychology, social work, physiotherapy, nutrition, etc.)



A model that is gaining popularity among patients and health care professionals

- 153 family physicians
- 17 nurse practitioners
- 40 other health professionals



“Traditional family medicine is suffering, and this new model is here to help. I’m accessible much faster and able to provide better follow-up. I have been able to take on new patients, something I hadn’t been able to do for ten years.”

- Dr. Renelle Gautreau,
family physician in Dieppe



Results so far

(as of June 1, 2024)

- Average wait time reduced from 12.62 days to 7 days
- Addition and management of 13,749 new patients to the operational groups’ initial patient base of 63,369 patients, under the responsibility of local family health teams.

We want to extend a special thank you to Horizon Health Network for their ongoing collaboration.



For more information

www.vitalitenb.ca/en/points-service/local-family-health-teams

